

# JUVENILE JUSTICE IN WESTERN AUSTRALIA: THE TYRANNY OF CIRCUMSTANCE



Prepared for the 19<sup>th</sup> Annual Conference of the  
International Association of Prosecutors

November 2014

Dubai

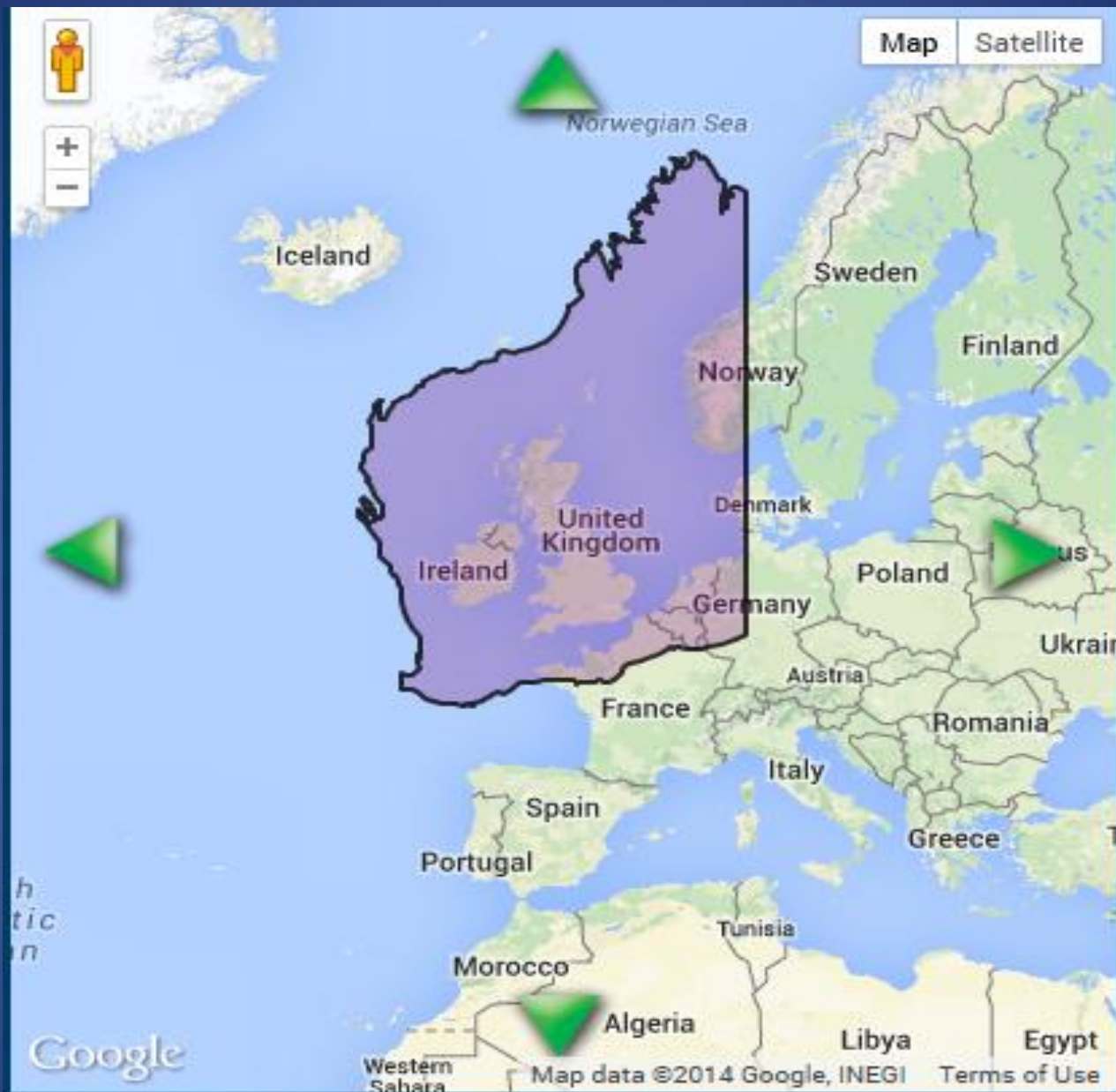
Genevieve Cleary

State Prosecutor, Office of the Director of Public  
Prosecutions for Western Australia



DIRECTOR OF PUBLIC PROSECUTIONS  
for WESTERN AUSTRALIA





<b>1</b>	<b>95</b>	<b>GREAT NORTHERN HWY</b>
Dalwallinu	231	
Mount Magnet	549	
Meekatharra	743	
(Newman)	1164	
(Port Headland)	1613	
(Broome)	2154	
(Derby)	2308	
Fitzroy Crossing	2482	
Halls Creek	2771	
Wyndham	3139	





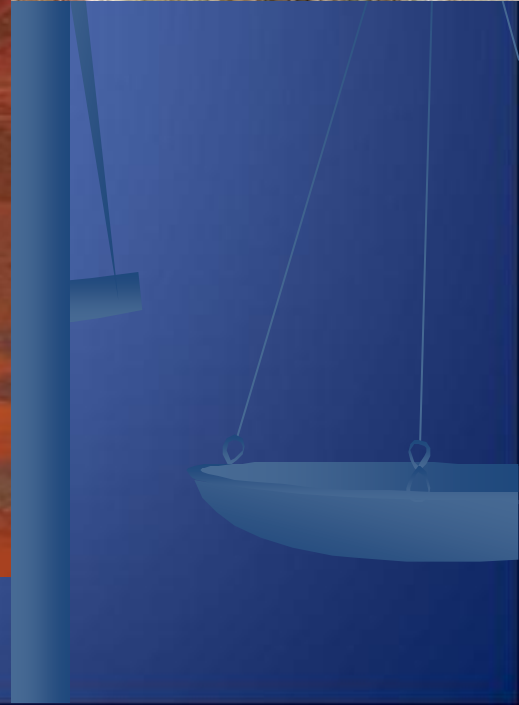


DIRECTOR OF PUBLIC PROSECUTIONS for  
WESTERN AUSTRALIA





vineyards, cowaramup  
photo courtesy tourism wa



DIRECTOR OF PUBLIC PROSECUTIONS for  
WESTERN AUSTRALIA





DIRECTOR OF PUBLIC PROSECUTIONS for  
WESTERN AUSTRALIA





DIRECTOR OF PUBLIC PROSECUTIONS for  
WESTERN AUSTRALIA





DIRECTOR OF PUBLIC PROSECUTIONS for  
WESTERN AUSTRALIA





DIRECTOR OF PUBLIC PROSECUTIONS for  
WESTERN AUSTRALIA





DIRECTOR OF PUBLIC PROSECUTIONS for  
WESTERN AUSTRALIA



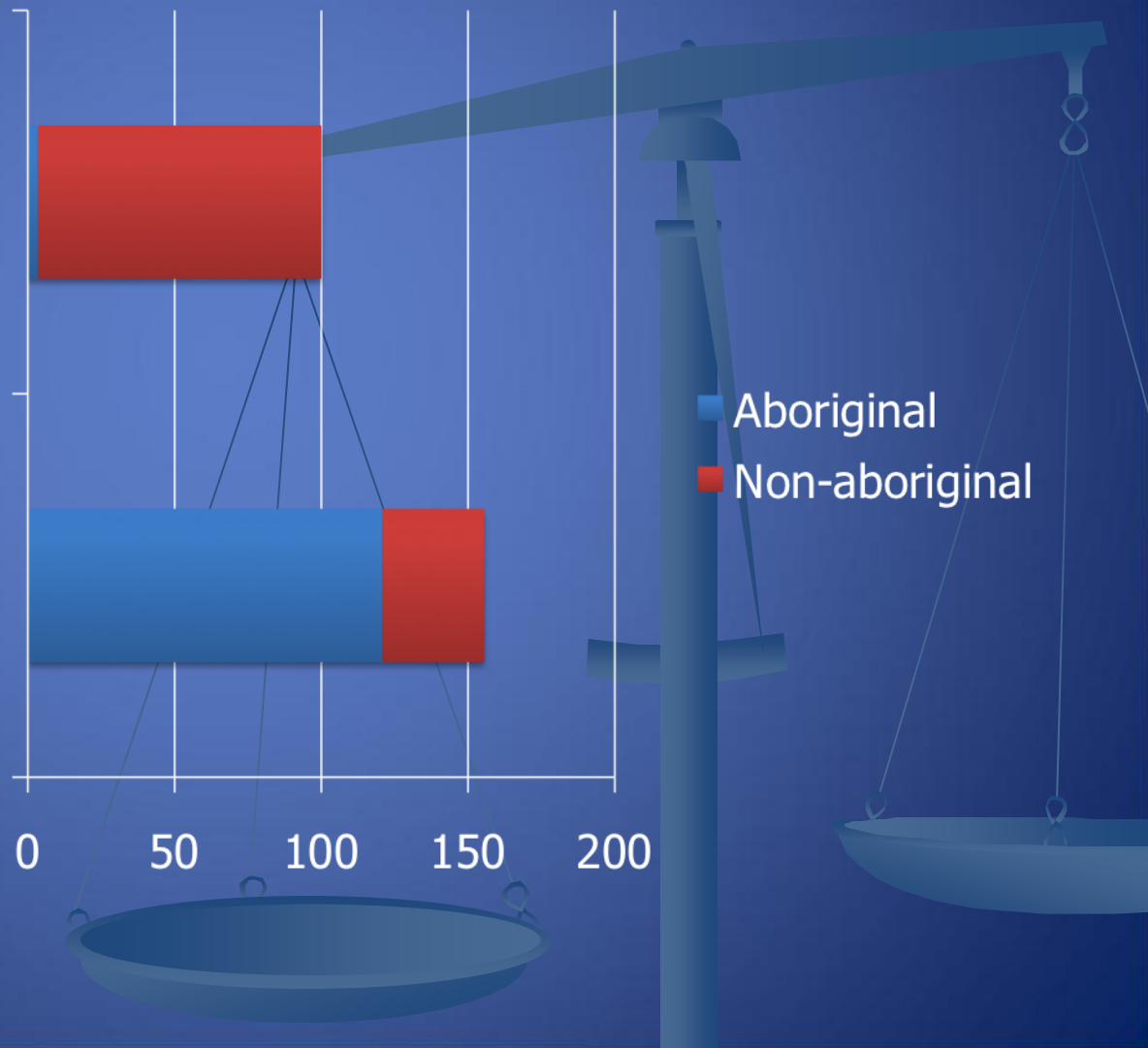


DIRECTOR OF PUBLIC PROSECUTIONS for  
WESTERN AUSTRALIA



Total percentage population  
in WA

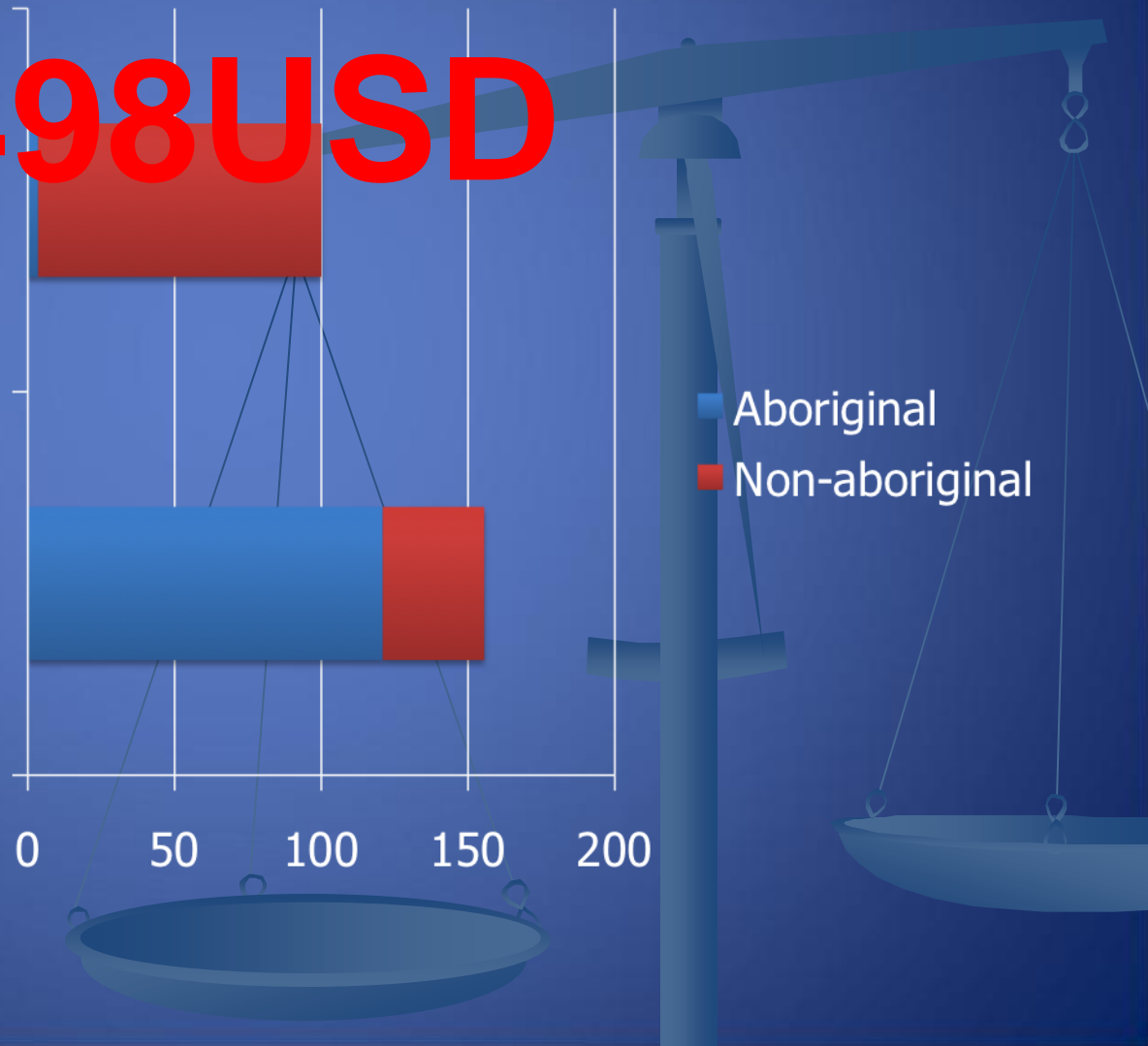
Average daily juvenile  
detention



# 567AUD or 498USD

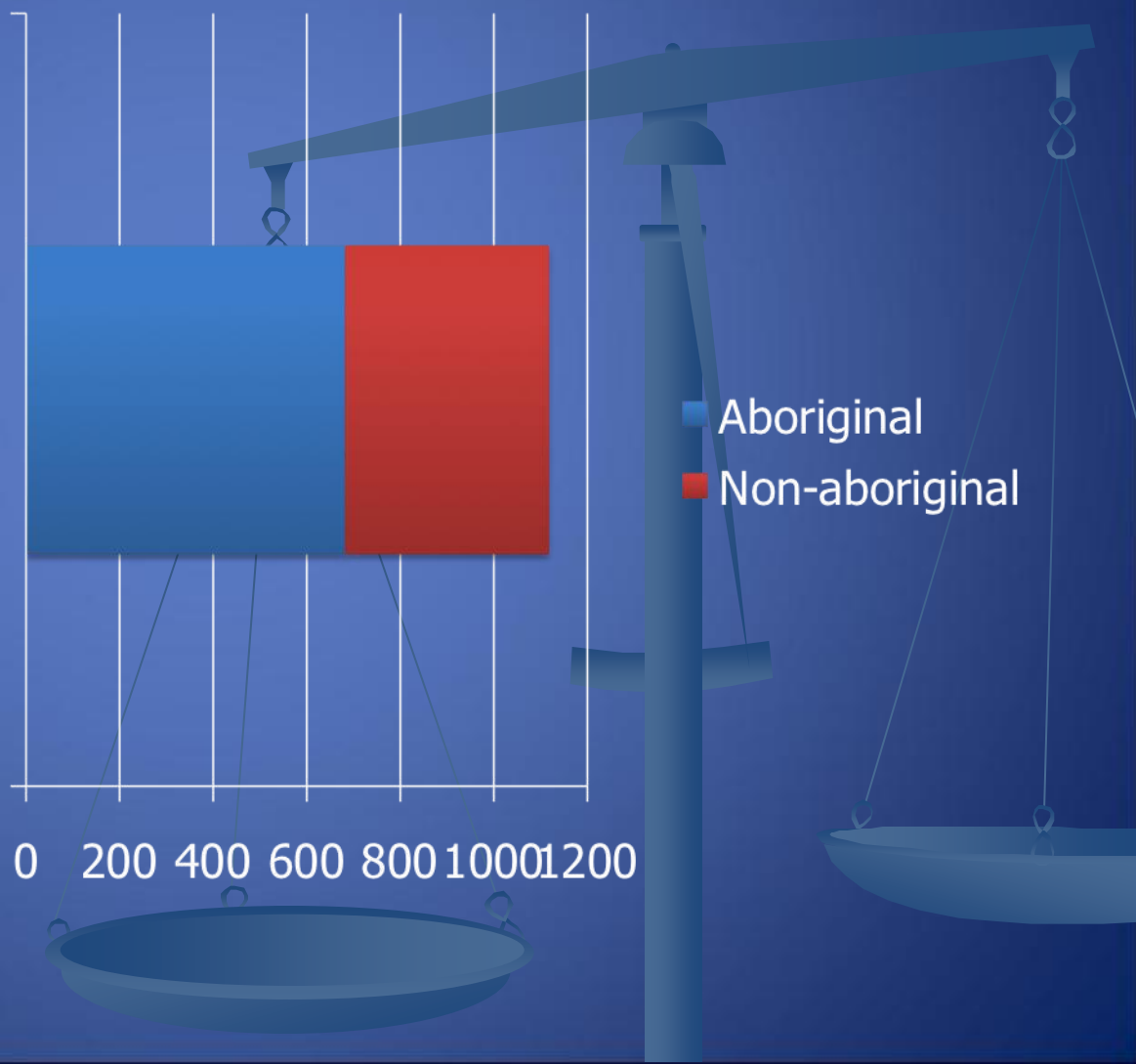
Total percentage population  
in WA

Average daily juvenile  
detention

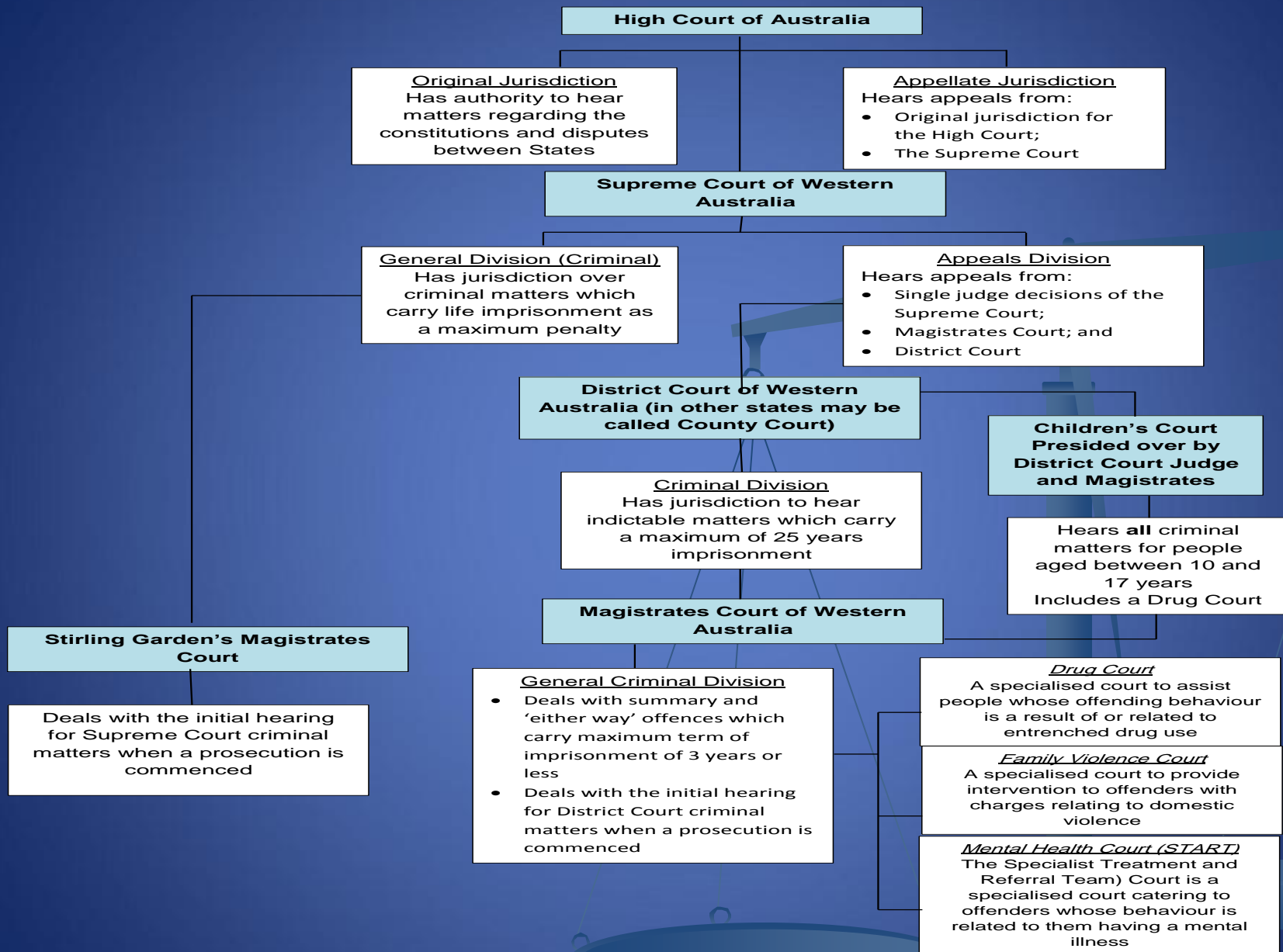




# Juvenile offenders being supervised in the community



# HIERACHY OF COURTS IN WA



ANZSOC Offence	2008/09	2009/10	2010/11	2011/12	2012/13	% Change 1 Year	% Change 5 Years
01: Homicide and Related Offences	3	6	1	5	8	n/a	n/a
02: Acts Intended to Cause Injury	1,547	1,570	1,234	1,068	917	-14.1%	-40.7%
03: Sexual Assault and Related Offences	299	312	394	341	334	-2.1%	11.7%
04: Dangerous or Negligent Acts Endangering Persons	937	701	547	445	405	-9.0%	-56.8%
05: Abduction, Harassment and Other Offences Against the Person	162	207	166	147	122	-17.0%	-24.7%
06: Robbery, Extortion and Related Offences	389	482	527	380	329	-13.4%	-15.4%
07: Unlawful Entry With Intent/Burglary, Break and Enter	2,978	3,373	2,803	2,114	2,255	6.7%	-24.3%
08: Theft and Related Offences	5,400	5,857	5,197	4,504	4,616	2.5%	-14.5%
09: Fraud, Deception and Related Offences	250	162	146	125	129	3.2%	-48.4%
10: Illicit Drug Offences	720	819	571	455	522	14.7%	-27.5%
11: Prohibited and Regulated Weapons And Explosives Offences	118	109	106	65	66	1.5%	-44.1%
12: Property Damage and Environmental Pollution	2,222	3,584	2,525	2,205	1,703	-22.8%	-23.4%
13: Public Order Offences	2,213	2,245	1,655	1,446	1,479	2.3%	-33.2%
14: Traffic and Vehicle Regulatory Offences	4,894	3,613	2,917	2,728	2,352	-13.8%	-51.9%
15: Offences Against Justice Procedures, Government Security and Government Operations	1,963	1,687	1,435	1,506	1,093	-27.4%	-44.3%
16: Miscellaneous Offences	70	75	56	15	17	13.3%	-75.7%
<b>Total</b>	<b>24,165</b>	<b>24,802</b>	<b>20,280</b>	<b>17,549</b>	<b>16,347</b>	<b>-6.8%</b>	<b>-32.4%</b>





# Our Locations

*Please note: these maps are for illustrative purposes only.*

The following figures are based on offender and staff numbers taken on 30 June 2014. Total offenders is inclusive of adults and youth in the community, prison and detention.

## Kimberley

Offenders **610** Staff **277**

## Pilbara

Offenders **537** Staff **158**

## Midwest Gascoyne

Offenders **636** Staff **251**

## Goldfields

Offenders **360** Staff **146**

## Metropolitan

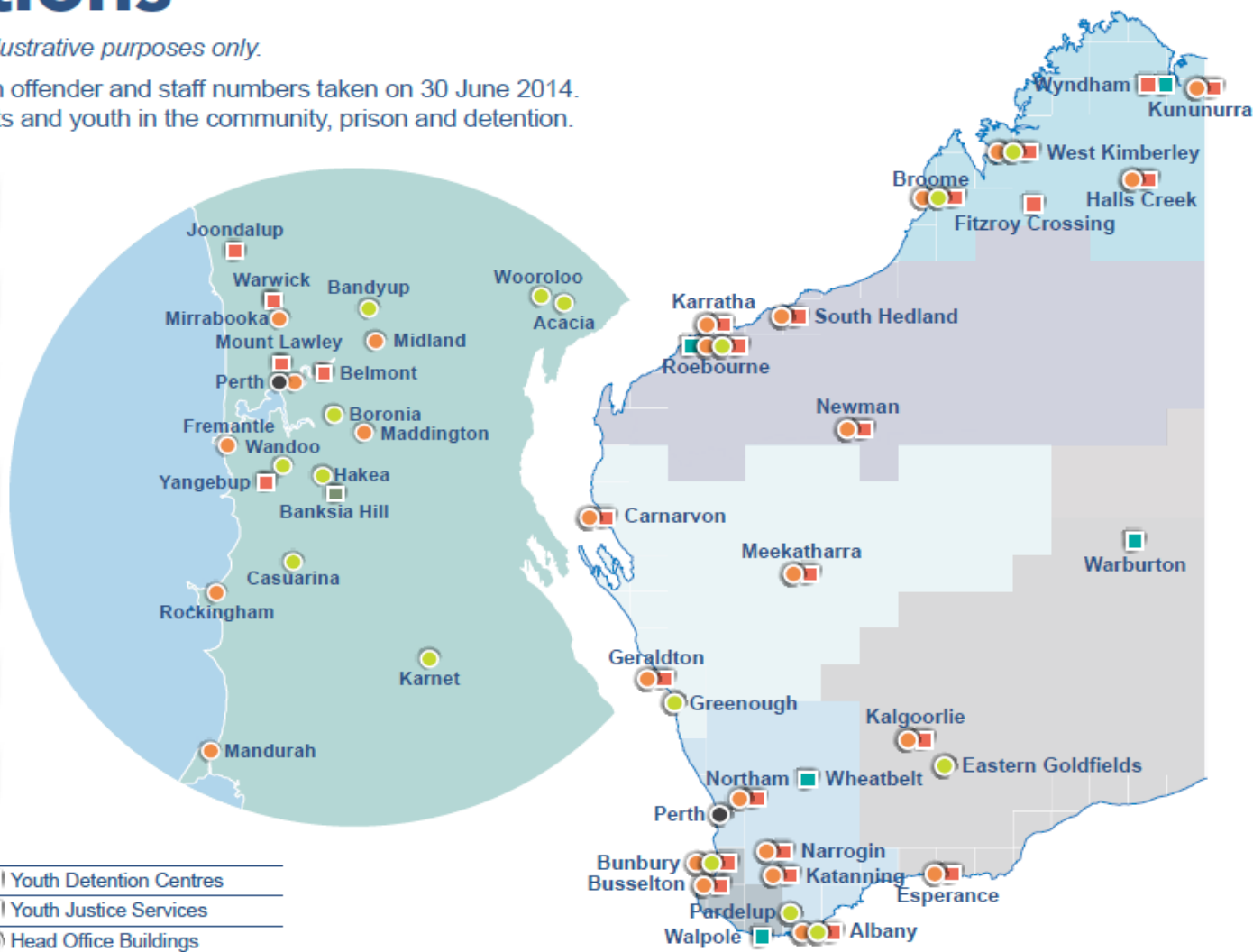
Offenders **7,044** Staff **3,166**

## Great Southern

Offenders **815** Staff **296**

## South West

Offenders **692** Staff **245**

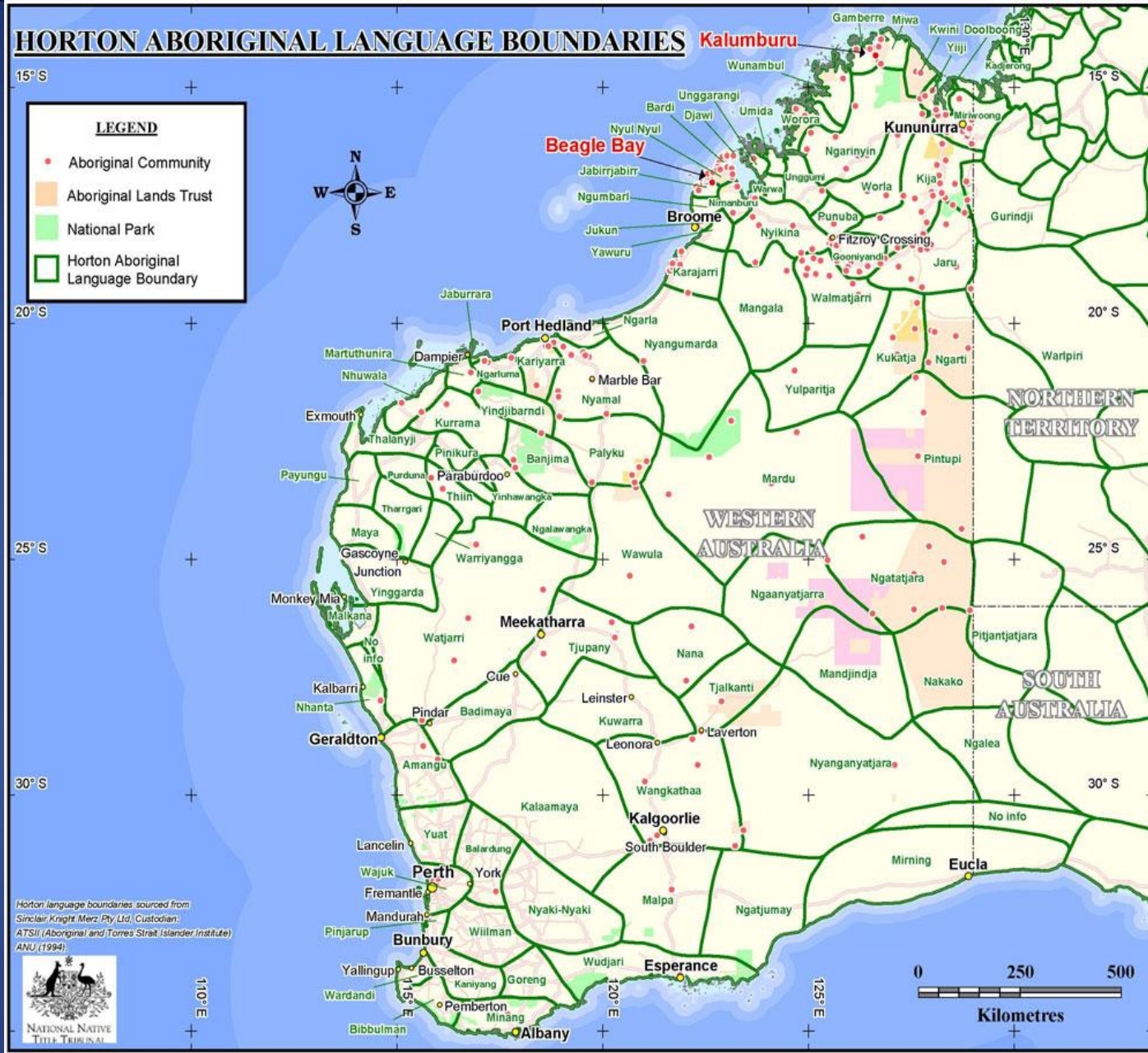




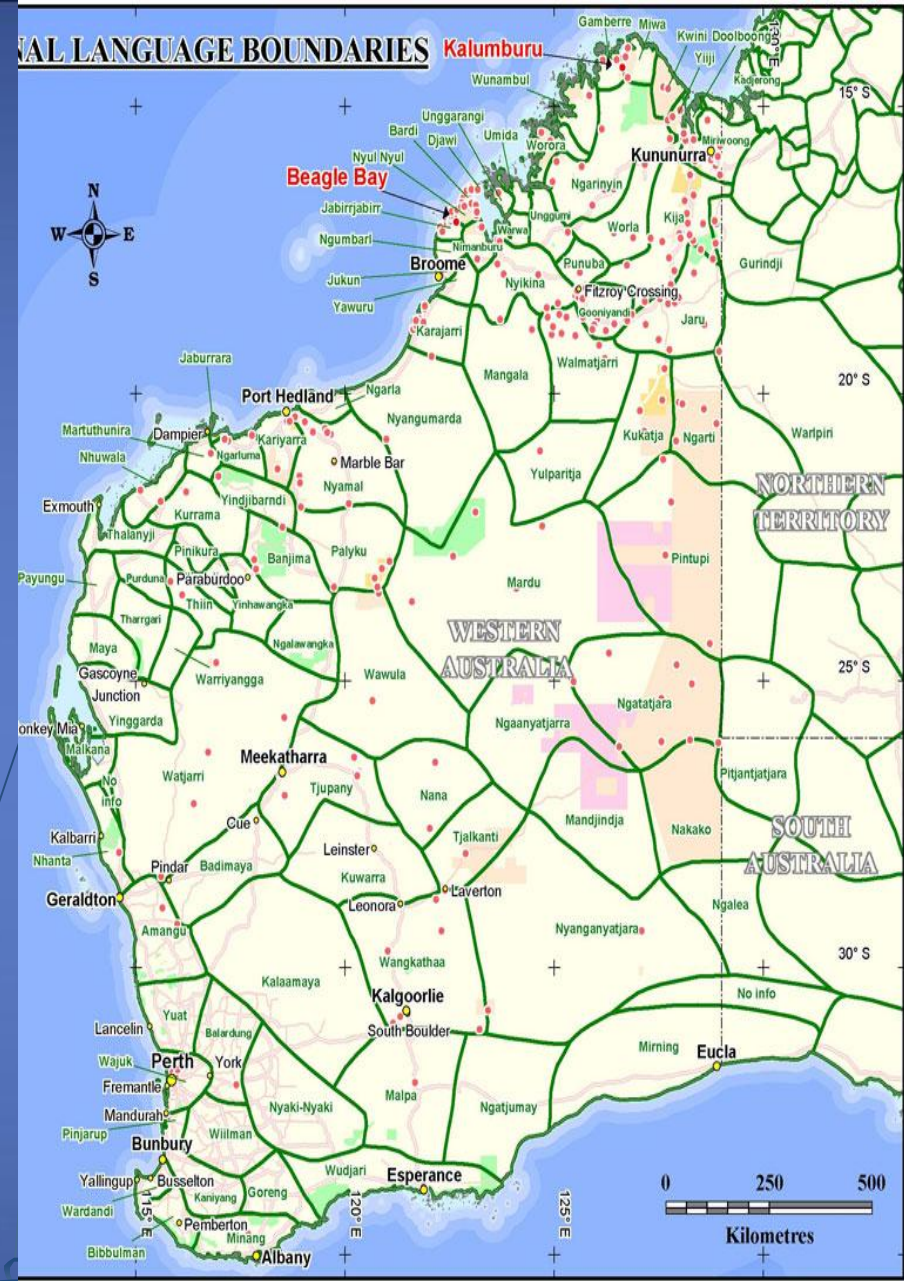
DIRECTOR OF PUBLIC PROSECUTIONS for  
WESTERN AUSTRALIA



# HORTON ABORIGINAL LANGUAGE BOUNDARIES







DIRECTOR OF PUBLIC PROSECUTIONS  
for WESTERN AUSTRALIA